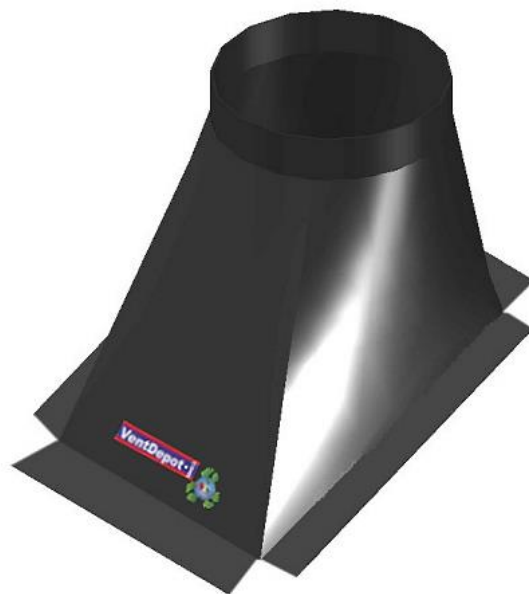


**General Characteristics of Slope Roof Mounting Base StainlessSlope**

The StainlessSlope is a stainlesssteel made Slope base made for StainlessSteel turbines.  
 Installed properly the Slope bases will stop the turbines from leaking water.  
 Perfect for Ventilation, Cooling and the extraction of fumes, dust, smoke, pollen or gases etc.  
 The StainlessSlope bases are made from sheet StainlessSteel, with excellent manufacturing detail.  
 The StainlessSlope bases for the turbines, allow them to operate Correctly and more efficiently.  
 All turbines and bases must be leveled horizontally for them to work properly and have proper air flow.  
 When ordering the StainlessSlope the pitch will need to be supplied by Customer.  
 For Industrial, Commercial, and Residential use.



**Product Applications of Slope Roof Mounting Base StainlessSlope**

These bases are used with our Turbine Vents for ventilation in small, medium, and large areas, bathrooms, warehouses, factories, Commercial buildings, and all large ventilation projects.

**Warranties of Slope Roof Mounting Base StainlessSlope**

Manufacturer's Limited Warranty: 10 Years, void with Tornados, Hurricanes, Chimneys, and Chemical Destruction

Specific Characteristics of Slope Roof Mounting Base StainlessSlope									
Item #	Manufacturing #	Diameter S In.	Pitch	Material	Base Height H In.	Roof Opening O In.	Flange F In.	Weight Dimens Pack	
								Lbs.	L
<b>USSTL-001</b>	SB04SSU-01/12	4	1/12	StainlessSteel	10	6x6	4	7	
<b>USSTL-002</b>	SB04SSU-02/12	4	2/12	StainlessSteel	10	6x6	4	7	
<b>USSTL-003</b>	SB04SSU-03/12	4	3/12	StainlessSteel	10	6x6	4	7	
<b>USSTL-004</b>	SB04SSU-04/12	4	4/12	StainlessSteel	10	6x6	4	7	
<b>USSTL-005</b>	SB04SSU-05/12	4	5/12	StainlessSteel	10	6x6	4	7	
<b>USSTL-006</b>	SB04SSU-06/12	4	6/12	StainlessSteel	10	6x6	4	7	
<b>USSTL-007</b>	SB04SSO-07/12	4	7/12	StainlessSteel	10	6x6	4	7	
<b>USSTL-008</b>	SB04SSO-08/12	4	8/12	StainlessSteel	10	6x6	4	7	
<b>USSTL-009</b>	SB04SSO-09/12	4	9/12	StainlessSteel	10	6x6	4	7	
<b>USSTL-010</b>	SB04SSO-10/12	4	10/12	StainlessSteel	10	6x6	4	7	
<b>USSTL-011</b>	SB04SSO-11/12	4	11/12	StainlessSteel	10	6x6	4	7	
<b>USSTL-012</b>	SB04SSO-12/12	4	12/12	StainlessSteel	10	6x6	4	7	
<b>USSTL-013</b>	SB05SSU-01/12	5	1/12	StainlessSteel	10	8x8	4	9	
<b>USSTL-014</b>	SB05SSU-02/12	5	2/12	StainlessSteel	10	8x8	4	9	

**StainlessSlope**  
**Slope Roof Mounting Base**  
 Data Sheet

Item #	Manufacturing #	Diameter S In.	Pitch	Material	Base Height H In.	Roof Opening O In.	Flange F In.	Weight Dimens Pack	
								Lbs.	L
USSTL-015	SB05SSU-03/12	5	3/12	StainlessSteel	10	8x8	4	9	
USSTL-016	SB05SSU-04/12	5	4/12	StainlessSteel	10	8x8	4	9	
USSTL-017	SB05SSU-05/12	5	5/12	StainlessSteel	10	8x8	4	9	
USSTL-018	SB05SSU-06/12	5	6/12	StainlessSteel	10	8x8	4	9	
USSTL-019	SB05SSO-07/12	5	7/12	StainlessSteel	10	8x8	4	9	
USSTL-020	SB05SSO-08/12	5	8/12	StainlessSteel	10	8x8	4	9	
USSTL-021	SB05SSO-09/12	5	9/12	StainlessSteel	10	8x8	4	9	
USSTL-022	SB05SSO-10/12	5	10/12	StainlessSteel	10	8x8	4	9	
USSTL-023	SB05SSO-11/12	5	11/12	StainlessSteel	10	8x8	4	9	
USSTL-024	SB05SSO-12/12	5	12/12	StainlessSteel	10	8x8	4	9	
USSTL-025	SB06SSU-01/12	6	1/12	StainlessSteel	10	8x8	4	9	
USSTL-026	SB06SSU-02/12	6	2/12	StainlessSteel	10	8x8	4	9	
USSTL-027	SB06SSU-03/12	6	3/12	StainlessSteel	10	8x8	4	9	
USSTL-028	SB06SSU-04/12	6	4/12	StainlessSteel	10	8x8	4	9	
USSTL-029	SB06SSU-05/12	6	5/12	StainlessSteel	10	8x8	4	9	
USSTL-030	SB06SSU-06/12	6	6/12	StainlessSteel	10	8x8	4	9	
USSTL-031	SB06SSO-07/12	6	7/12	StainlessSteel	10	8x8	4	9	
USSTL-032	SB06SSO-08/12	6	8/12	StainlessSteel	10	8x8	4	9	
USSTL-033	SB06SSO-09/12	6	9/12	StainlessSteel	10	8x8	4	9	
USSTL-034	SB06SSO-10/12	6	10/12	StainlessSteel	10	8x8	4	9	
USSTL-035	SB06SSO-11/12	6	11/12	StainlessSteel	10	8x8	4	9	
USSTL-036	SB06SSO-12/12	6	12/12	StainlessSteel	10	8x8	4	9	
USSTL-037	SB07SSU-01/12	7	1/12	StainlessSteel	10	10x10	4	10	
USSTL-038	SB07SSU-02/12	7	2/12	StainlessSteel	10	10x10	4	10	
USSTL-039	SB07SSU-03/12	7	3/12	StainlessSteel	10	10x10	4	10	
USSTL-040	SB07SSU-04/12	7	4/12	StainlessSteel	10	10x10	4	10	
USSTL-041	SB07SSU-05/12	7	5/12	StainlessSteel	10	10x10	4	10	
USSTL-042	SB07SSU-06/12	7	6/12	StainlessSteel	10	10x10	4	10	
USSTL-043	SB07SSO-07/12	7	7/12	StainlessSteel	10	10x10	4	10	
USSTL-044	SB07SSO-08/12	7	8/12	StainlessSteel	10	10x10	4	10	
USSTL-045	SB07SSO-09/12	7	9/12	StainlessSteel	10	10x10	4	10	
USSTL-046	SB07SSO-10/12	7	10/12	StainlessSteel	10	10x10	4	10	
USSTL-047	SB07SSO-11/12	7	11/12	StainlessSteel	10	10x10	4	10	
USSTL-048	SB07SSO-12/12	7	12/12	StainlessSteel	10	10x10	4	10	
USSTL-049	SB08SSU-01/12	8	1/12	StainlessSteel	10	10x10	4	10	
USSTL-050	SB08SSU-02/12	8	2/12	StainlessSteel	10	10x10	4	10	
USSTL-051	SB08SSU-03/12	8	3/12	StainlessSteel	10	10x10	4	10	
USSTL-052	SB08SSU-04/12	8	4/12	StainlessSteel	10	10x10	4	10	
USSTL-053	SB08SSU-05/12	8	5/12	StainlessSteel	10	10x10	4	10	
USSTL-054	SB08SSU-06/12	8	6/12	StainlessSteel	10	10x10	4	10	
USSTL-055	SB08SSO-07/12	8	7/12	StainlessSteel	10	10x10	4	10	
USSTL-056	SB08SSO-08/12	8	8/12	StainlessSteel	10	10x10	4	10	
USSTL-057	SB08SSO-09/12	8	9/12	StainlessSteel	10	10x10	4	10	
USSTL-058	SB08SSO-10/12	8	10/12	StainlessSteel	10	10x10	4	10	
USSTL-059	SB08SSO-11/12	8	11/12	StainlessSteel	10	10x10	4	10	

## StainlessSlope Slope Roof Mounting Base

Data Sheet

Item #	Manufacturing #	Diameter S In.	Pitch	Material	Base Height H In.	Roof Opening O In.	Flange F In.	Weight Dimens Pack	
								Lbs.	
USSTL-060	SB08SSO-12/12	8	12/12	StainlessSteel	10	10x10	4	10	
USSTL-061	SB09SSU-01/12	9	1/12	StainlessSteel	10	12x12	4	13	
USSTL-062	SB09SSU-02/12	9	2/12	StainlessSteel	10	12x12	4	13	
USSTL-063	SB09SSU-03/12	9	3/12	StainlessSteel	10	12x12	4	13	
USSTL-064	SB09SSU-04/12	9	4/12	StainlessSteel	10	12x12	4	13	
USSTL-065	SB09SSU-05/12	9	5/12	StainlessSteel	10	12x12	4	13	
USSTL-066	SB09SSU-06/12	9	6/12	StainlessSteel	10	12x12	4	13	
USSTL-067	SB09SSO-07/12	9	7/12	StainlessSteel	10	12x12	4	13	
USSTL-068	SB09SSO-08/12	9	8/12	StainlessSteel	10	12x12	4	13	
USSTL-069	SB09SSO-09/12	9	9/12	StainlessSteel	10	12x12	4	13	
USSTL-070	SB09SSO-10/12	9	10/12	StainlessSteel	10	12x12	4	13	
USSTL-071	SB09SSO-11/12	9	11/12	StainlessSteel	10	12x12	4	13	
USSTL-072	SB09SSO-12/12	9	12/12	StainlessSteel	10	12x12	4	13	
USSTL-073	SB10SSU-01/12	10	1/12	StainlessSteel	10	12x12	4	13	
USSTL-074	SB10SSU-02/12	10	2/12	StainlessSteel	10	12x12	4	13	
USSTL-075	SB10SSU-03/12	10	3/12	StainlessSteel	10	12x12	4	13	
USSTL-076	SB10SSU-04/12	10	4/12	StainlessSteel	10	12x12	4	13	
USSTL-077	SB10SSU-05/12	10	5/12	StainlessSteel	10	12x12	4	13	
USSTL-078	SB10SSU-06/12	10	6/12	StainlessSteel	10	12x12	4	13	
USSTL-079	SB10SSO-07/12	10	7/12	StainlessSteel	10	12x12	4	13	
USSTL-080	SB10SSO-08/12	10	8/12	StainlessSteel	10	12x12	4	13	
USSTL-081	SB10SSO-09/12	10	9/12	StainlessSteel	10	12x12	4	13	
USSTL-082	SB10SSO-10/12	10	10/12	StainlessSteel	10	12x12	4	13	
USSTL-083	SB10SSO-11/12	10	11/12	StainlessSteel	10	12x12	4	13	
USSTL-084	SB10SSO-12/12	10	12/12	StainlessSteel	10	12x12	4	13	
USSTL-085	SB12SSU-01/12	12	1/12	StainlessSteel	10	14x14	4	15	
USSTL-086	SB12SSU-02/12	12	2/12	StainlessSteel	10	14x14	4	15	
USSTL-087	SB12SSU-03/12	12	3/12	StainlessSteel	10	14x14	4	15	
USSTL-088	SB12SSU-04/12	12	4/12	StainlessSteel	10	14x14	4	15	
USSTL-089	SB12SSU-05/12	12	5/12	StainlessSteel	10	14x14	4	15	
USSTL-090	SB12SSU-06/12	12	6/12	StainlessSteel	10	14x14	4	15	
USSTL-091	SB12SSO-07/12	12	7/12	StainlessSteel	10	14x14	4	15	
USSTL-092	SB12SSO-08/12	12	8/12	StainlessSteel	10	14x14	4	15	
USSTL-093	SB12SSO-09/12	12	9/12	StainlessSteel	10	14x14	4	15	
USSTL-094	SB12SSO-10/12	12	10/12	StainlessSteel	10	14x14	4	15	
USSTL-095	SB12SSO-11/12	12	11/12	StainlessSteel	10	14x14	4	15	
USSTL-096	SB12SSO-12/12	12	12/12	StainlessSteel	10	14x14	4	15	
USSTL-097	SB14SSU-01/12	14	1/12	StainlessSteel	10	16x16	4	23	
USSTL-098	SB14SSU-02/12	14	2/12	StainlessSteel	10	16x16	4	23	
USSTL-099	SB14SSU-03/12	14	3/12	StainlessSteel	10	16x16	4	23	
USSTL-100	SB14SSU-04/12	14	4/12	StainlessSteel	10	16x16	4	23	
USSTL-101	SB14SSU-05/12	14	5/12	StainlessSteel	10	16x16	4	23	
USSTL-102	SB14SSU-06/12	14	6/12	StainlessSteel	10	16x16	4	23	
USSTL-103	SB14SSO-07/12	14	7/12	StainlessSteel	10	16x16	4	23	
USSTL-104	SB14SSO-08/12	14	8/12	StainlessSteel	10	16x16	4	23	
USSTL-105	SB14SSO-09/12	14	9/12	StainlessSteel	10	16x16	4	23	

**StainlessSlope**  
**Slope Roof Mounting Base**  
 Data Sheet

Item #	Manufacturing #	Diameter S In.	Pitch	Material	Base Height H In.	Roof Opening O In.	Flange F In.	Weight	
								Dimens Pack	Lbs.
USSTL-106	SB14SSO-10/12	14	10/12	StainlessSteel	10	16x16	4		23
USSTL-107	SB14SSO-11/12	14	11/12	StainlessSteel	10	16x16	4		23
USSTL-108	SB14SSO-12/12	14	12/12	StainlessSteel	10	16x16	4		23
USSTL-109	SB16SSU-01/12	16	1/12	StainlessSteel	10	18x18	4		33
USSTL-110	SB16SSU-02/12	16	2/12	StainlessSteel	10	18x18	4		33
USSTL-111	SB16SSU-03/12	16	3/12	StainlessSteel	10	18x18	4		33
USSTL-112	SB16SSU-04/12	16	4/12	StainlessSteel	10	18x18	4		33
USSTL-113	SB16SSU-05/12	16	5/12	StainlessSteel	10	18x18	4		33
USSTL-114	SB16SSU-06/12	16	6/12	StainlessSteel	10	18x18	4		33
USSTL-115	SB16SSO-07/12	15	7/12	StainlessSteel	10	18x18	4		33
USSTL-116	SB16SSO-08/12	15	8/12	StainlessSteel	10	18x18	4		33
USSTL-117	SB16SSO-09/12	15	9/12	StainlessSteel	10	18x18	4		33
USSTL-118	SB16SSO-10/12	15	10/12	StainlessSteel	10	18x18	4		33
USSTL-119	SB16SSO-11/12	15	11/12	StainlessSteel	10	18x18	4		33
USSTL-120	SB16SSO-12/12	15	12/12	StainlessSteel	10	18x18	4		33
USSTL-121	SB18SSU-01/12	18	1/12	StainlessSteel	10	22x22	4		40
USSTL-122	SB18SSU-02/12	18	2/12	StainlessSteel	10	22x22	4		40
USSTL-123	SB18SSU-03/12	18	3/12	StainlessSteel	10	22x22	4		40
USSTL-124	SB18SSU-04/12	18	4/12	StainlessSteel	10	22x22	4		40
USSTL-125	SB18SSU-05/12	18	5/12	StainlessSteel	10	22x22	4		40
USSTL-126	SB18SSU-06/12	18	6/12	StainlessSteel	10	22x22	4		40
USSTL-127	SB18SSO-07/12	18	7/12	StainlessSteel	10	22x22	4		40
USSTL-128	SB18SSO-08/12	18	8/12	StainlessSteel	10	22x22	4		40
USSTL-129	SB18SSO-09/12	18	9/12	StainlessSteel	10	22x22	4		40
USSTL-130	SB18SSO-10/12	18	10/12	StainlessSteel	10	22x22	4		40
USSTL-131	SB18SSO-11/12	18	11/12	StainlessSteel	10	22x22	4		40
USSTL-132	SB18SSO-12/12	18	12/12	StainlessSteel	10	22x22	4		40
USSTL-133	SB20SSU-01/12	20	1/12	StainlessSteel	10	24x24	4		48
USSTL-134	SB20SSU-02/12	20	2/12	StainlessSteel	10	24x24	4		48
USSTL-135	SB20SSU-03/12	20	3/12	StainlessSteel	10	24x24	4		48
USSTL-136	SB20SSU-04/12	20	4/12	StainlessSteel	10	24x24	4		48
USSTL-137	SB20SSU-05/12	20	5/12	StainlessSteel	10	24x24	4		48
USSTL-138	SB20SSU-06/12	20	6/12	StainlessSteel	10	24x24	4		48
USSTL-139	SB20SSO-07/12	20	7/12	StainlessSteel	10	24x24	4		48
USSTL-140	SB20SSO-08/12	20	8/12	StainlessSteel	10	24x24	4		48
USSTL-141	SB20SSO-09/12	20	9/12	StainlessSteel	10	24x24	4		48
USSTL-142	SB20SSO-10/12	20	10/12	StainlessSteel	10	24x24	4		48
USSTL-143	SB20SSO-11/12	20	11/12	StainlessSteel	10	24x24	4		48
USSTL-144	SB20SSO-12/12	20	12/12	StainlessSteel	10	24x24	4		48
USSTL-145	SB24SSU-01/12	24	1/12	StainlessSteel	12	30x30	4		60
USSTL-146	SB24SSU-02/12	24	2/12	StainlessSteel	12	30x30	4		60
USSTL-147	SB24SSU-03/12	24	3/12	StainlessSteel	12	30x30	4		60
USSTL-148	SB24SSU-04/12	24	4/12	StainlessSteel	12	30x30	4		60
USSTL-149	SB24SSU-05/12	24	5/12	StainlessSteel	12	30x30	4		60

Item #	Manufacturing #	Diameter S In.	Pitch	Material	Base Height H In.	Roof Opening O In.	Flange F In.	Weight
								Dimens Pack
								Lbs.
<b>USSTL-150</b>	SB24SSU-06/12	24	6/12	StainlessSteel	12	30x30	4	60
<b>USSTL-151</b>	SB24SSO-07/12	24	7/12	StainlessSteel	12	30x30	4	60
<b>USSTL-152</b>	SB24SSO-08/12	24	8/12	StainlessSteel	12	30x30	4	60
<b>USSTL-153</b>	SB24SSO-09/12	24	9/12	StainlessSteel	12	30x30	4	60
<b>USSTL-154</b>	SB24SSO-10/12	24	10/12	StainlessSteel	12	30x30	4	60
<b>USSTL-155</b>	SB24SSO-11/12	24	11/12	StainlessSteel	12	30x30	4	60
<b>USSTL-156</b>	SB24SSO-12/12	24	12/12	StainlessSteel	12	30x30	4	60

**Diagram for Curb Roof Mounting Base StainlessSlope Dimensions**

